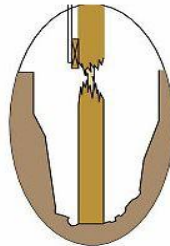


Sturdi-Wall Plus Post Repair System

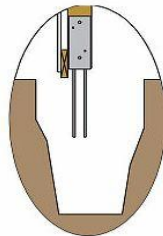
Step #1

- Dig the soil away from the rotted post.
- Inspect the treated lower board for decay; it may need to be replaced.
- Brace the rotted post by fastening a support beam under the truss and lifting with an adequate sized jack.
- Make sure the brace and jack assembly are installed safe and securely.



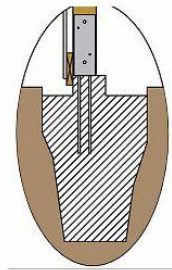
Step #2

- Saw off the rotted post approximately 3" below the top of the treated base board.
- Remove rotten section of post.
- Clean out all loose dirt from the bottom of the hole.
- Tamp bottom of the hole to insure a solid base for the poured concrete in Step #3.
- Attach the **Sturdi-Wall Plus** bracket to the bottom of the post.



Step #3

- Use treated base board as the outside form.
- Install additional forming around the base of the **Sturdi-Wall Plus** using plywood. The form should extend 2" to 3" beyond the post on three sides and flush with the base board.
- Pour concrete to the base of the form and allow the concrete to firm up slightly.
- After previous pour has firmed, pour concrete to the top of form (base of the bracket). Rod and tap concrete to insure a completely consolidated fill under the bracket. Do not over vibrate or aggregate will settle.
- Remove the brace and jack assembly after approximately 12 hours. Do not bump or fully load the repaired post for 30 days.



Contact Midwest Perma-Column

Midwest Perma-Column
7407 N Kickapoo Edwards Rd.
Edwards, IL 61528

Toll Free: 800.798.5562
Tel: 309.589.7949
Fax: 309.589.1199
Email: info@midwestpermcolum.com

